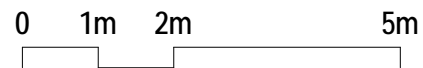


PARKING 19pl.

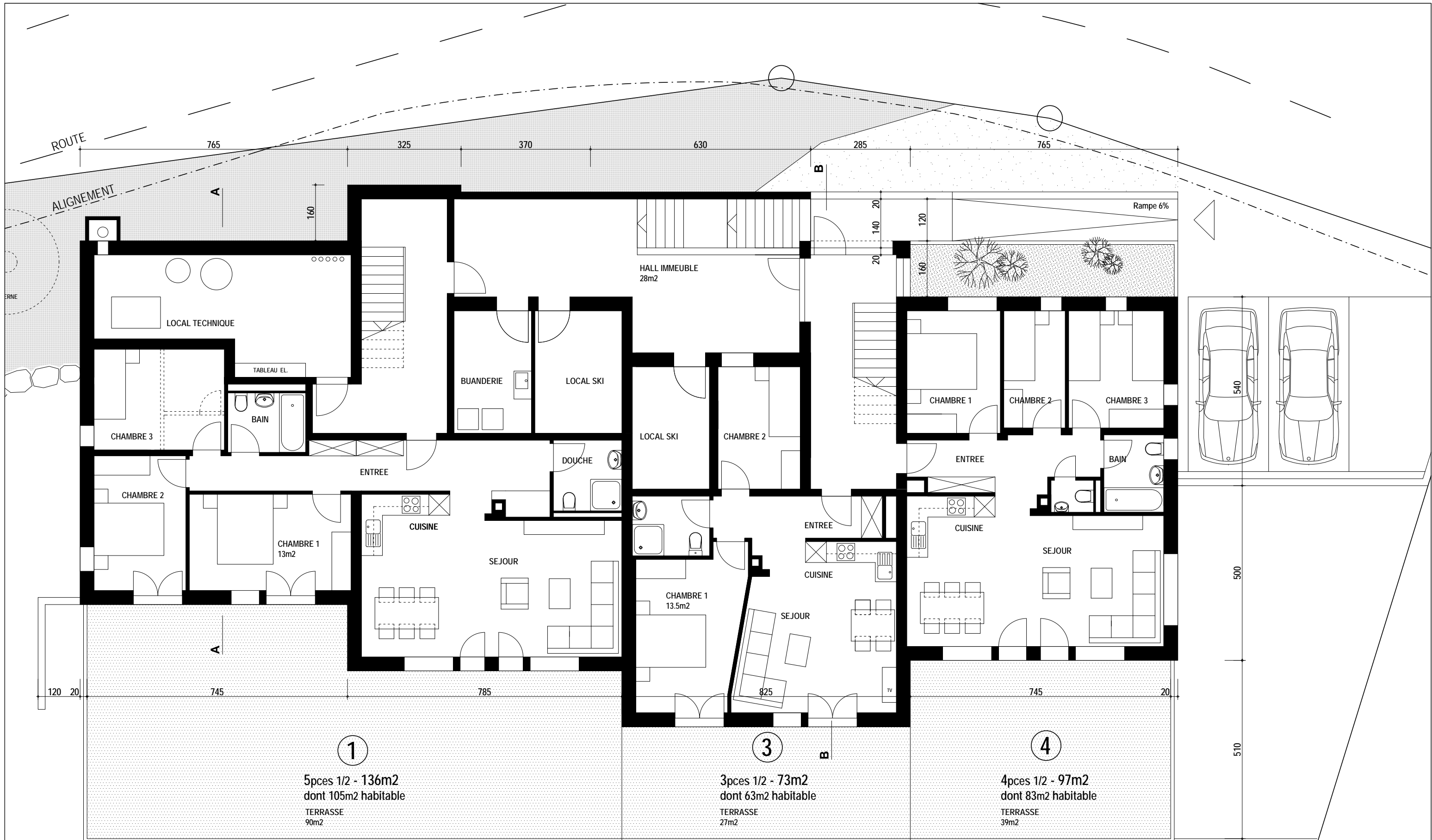


RESIDENCE "PISTE ROUGE"	ENQUETE PUBLIQUE	ECH. 1:100
GRIMENTZ - ANNIVIERS	PARKING	10.12.2010 - KV

Kittel SA
ARCHITECTES

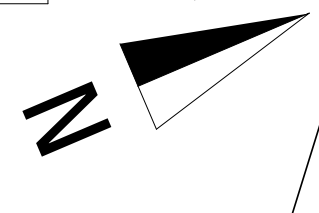
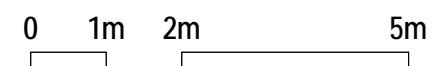
Jean Kittel & Cie SA Quinodoz & Vouilloz

Place de la Tour - 3961 Vissoie / Anniviers
Tél. 027 / 475 14 84 Fax 027 / 475 27 77
vouilloz @ kittelsa.ch www.kittelsa.ch



REZ-DE-CHAUSSEE

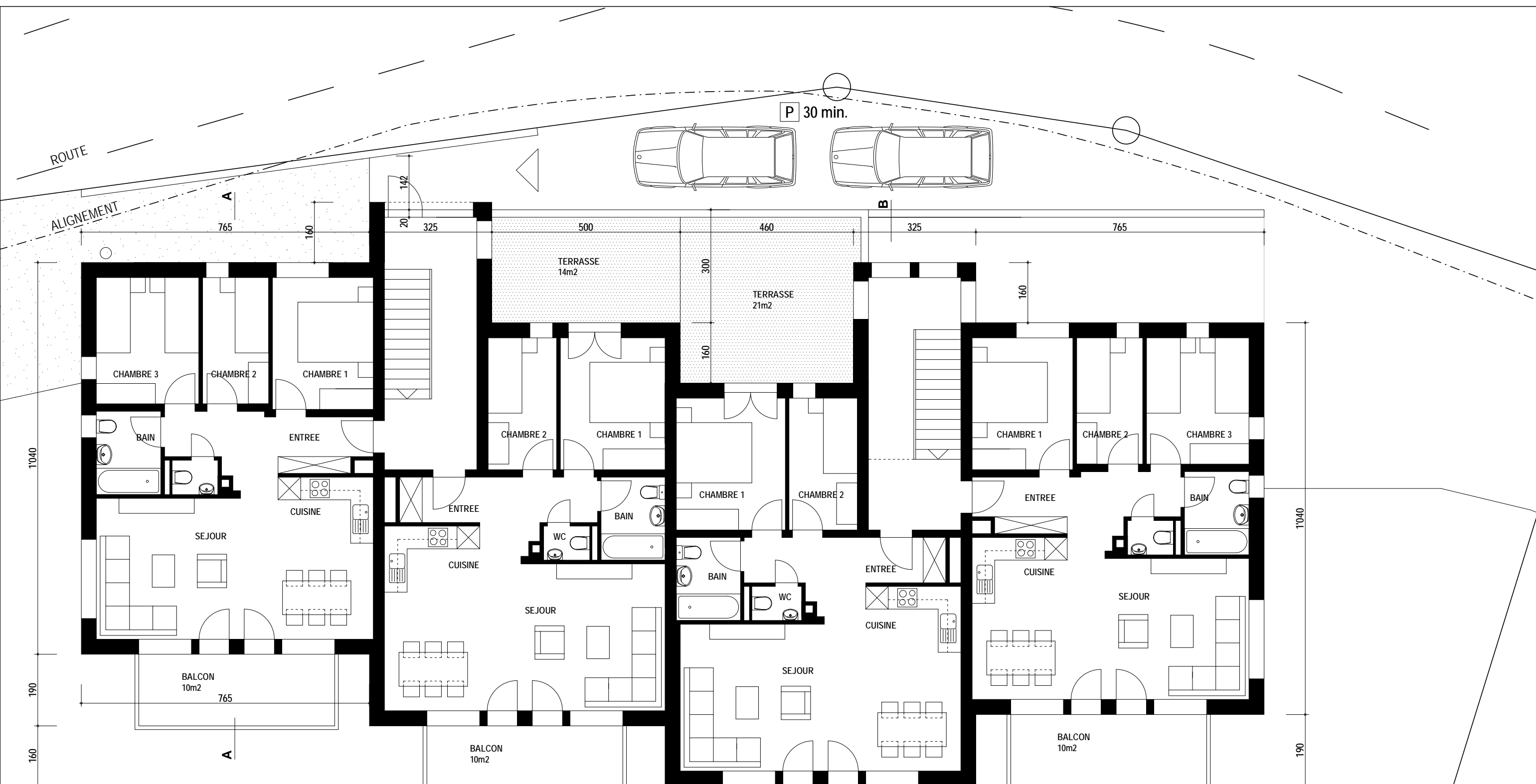
241m² habitable



RESIDENCE "PISTE ROUGE"	ENQUETE PUBLIQUE	ECH. 1:100
GRIMENTZ - ANNIVIERS	REZ	10.12.2010 - KV

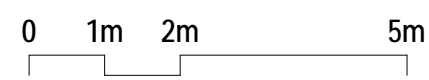
Kittel SA
ARCHITECTES
Jean Kittel & Cie SA Quinodoz & Vouilloz

Place de la Tour - 3961 Vissoie / Anniviers
Tél. 027 / 475 14 84 Fax 027 / 475 27 77
vouilloz @ kittelsa.ch www.kittelsa.ch



ETAGE 1

312m² habitable



5

3pcs 1/2 - 90m²
dont 83m² habitable

6

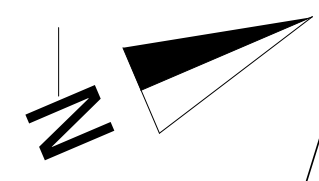
3pcs 1/2 - 80m²
dont 73m² habitable

7

3pcs 1/2 - 80m²
dont 73m² habitable

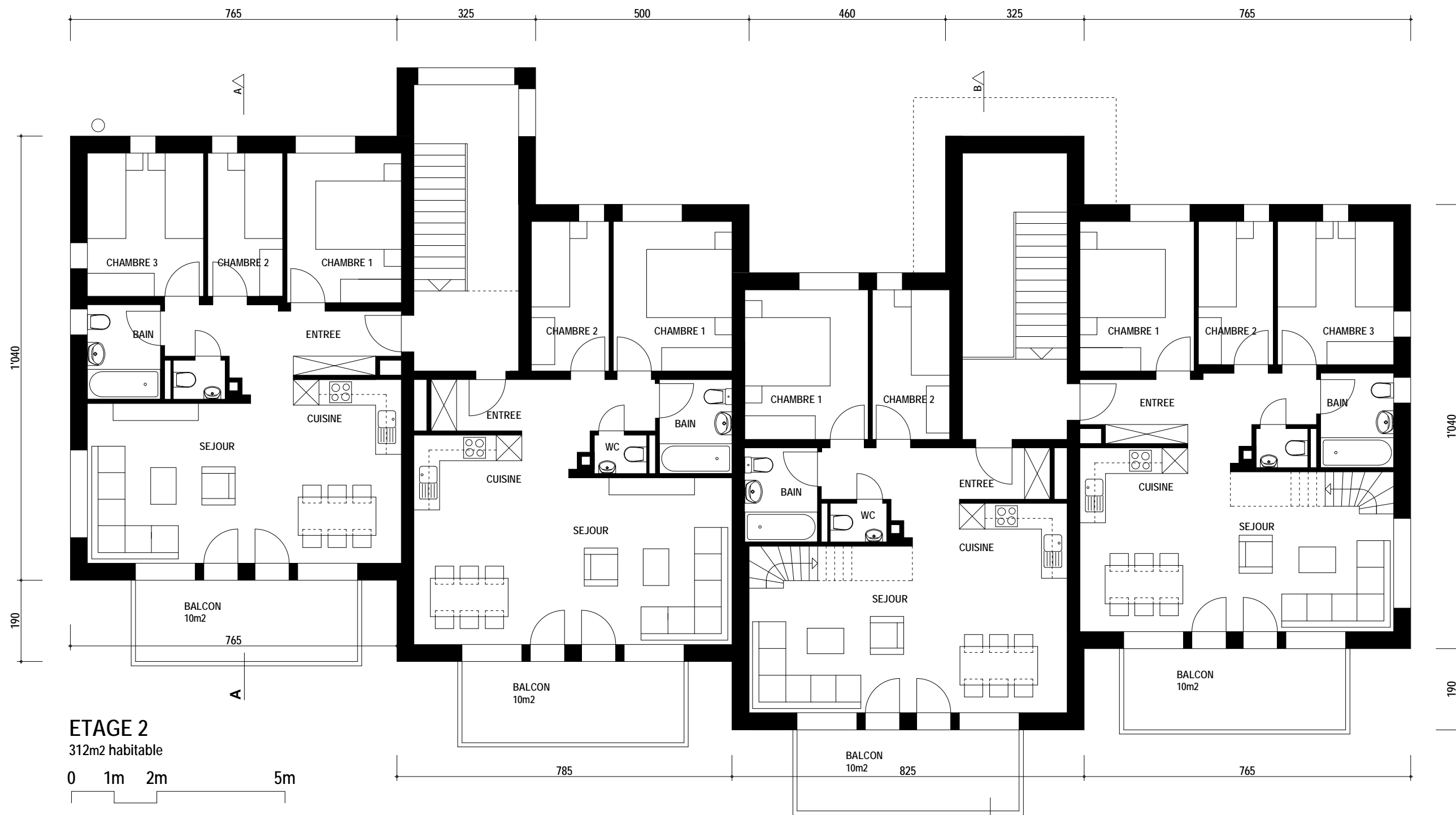
8

4pcs 1/2 - 90m²
dont 83m² habitable



RESIDENCE "PISTE ROUGE"	ENQUETE PUBLIQUE	ECH. 1:100
GRIMENTZ - ANNIVIERS	ETAGE 1	10.12.2010 - KV

Kittel SA ARCHITECTES Jean Kittel & Cie SA Quinodoz & Vouilloz	Place de la Tour - 3961 Vissoie / Anniviars	
	Tél. 027 / 475 14 84	Fax 027 / 475 27 77
	vouilloz @ kittelsa.ch	www.kittelsa.ch



ETAGE 2
312m² habitable

0 1m 2m 5m

9

4pcs 1/2 - 90m²
dont 83m² habitable

10

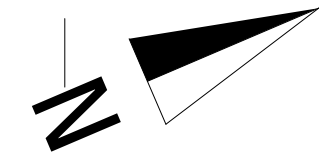
3pcs 1/2 - 80m²
dont 73m² habitable

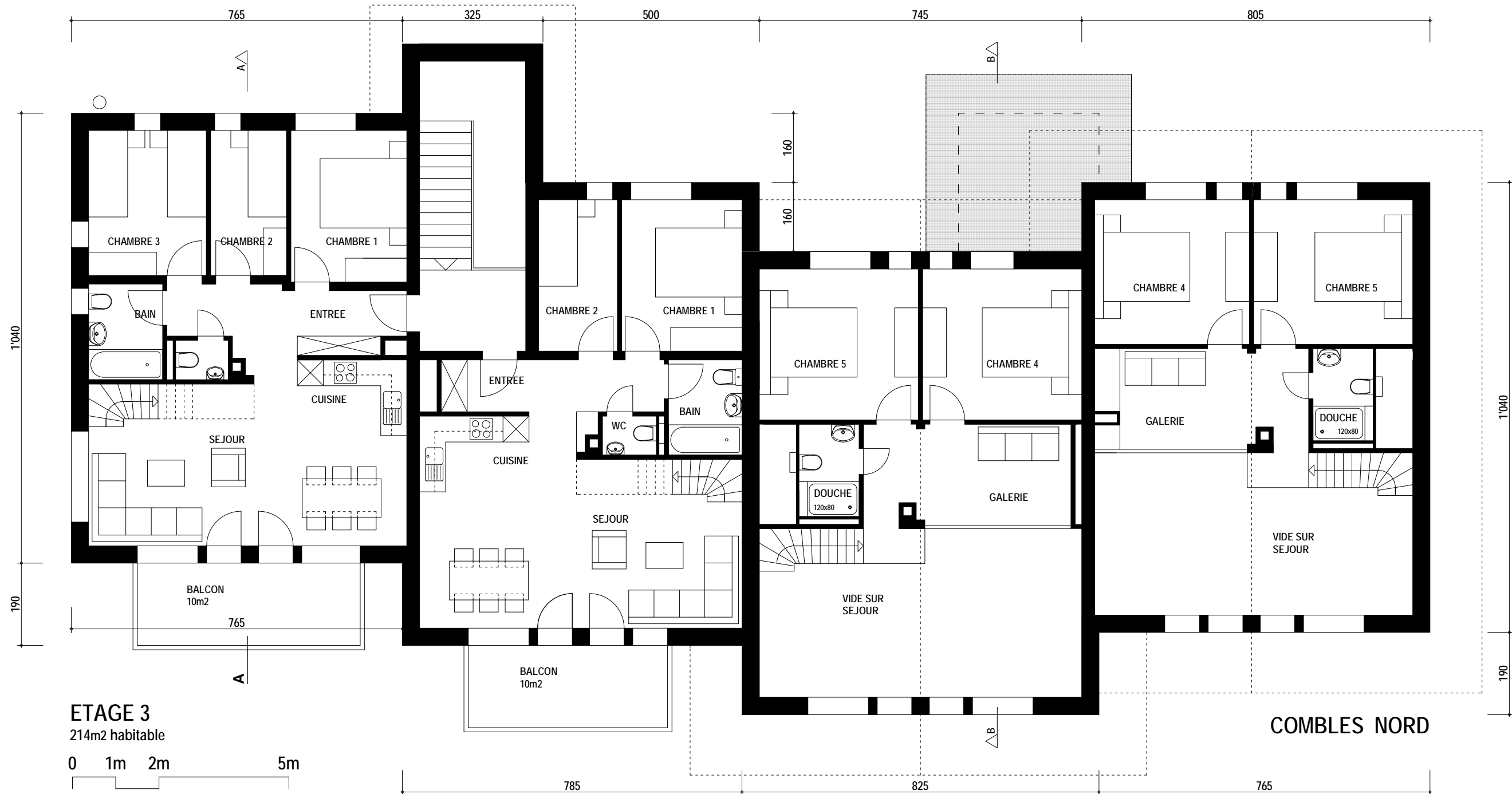
11

5pcs 1/2 - 109m²
dont 102m² habitable

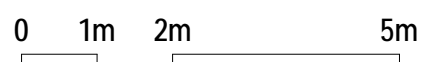
12

6pcs 1/2 - 119m²
dont 112m² habitable





ETAGE 3
214m² habitable



13

6pcs 1/2 - 119m²
dont 112m² habitable

14

5pcs 1/2 - 109m²
dont 102m² habitable

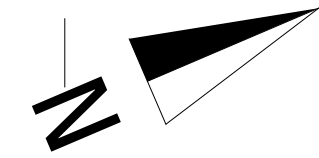
11

5pcs 1/2 - Galerie

12

6pcs 1/2 - Galerie

COMBLES NORD





FAITE
NIV. +13.17

COMBLES SUD
NIV. +10.54

ETAGE 3
NIV. +7.98

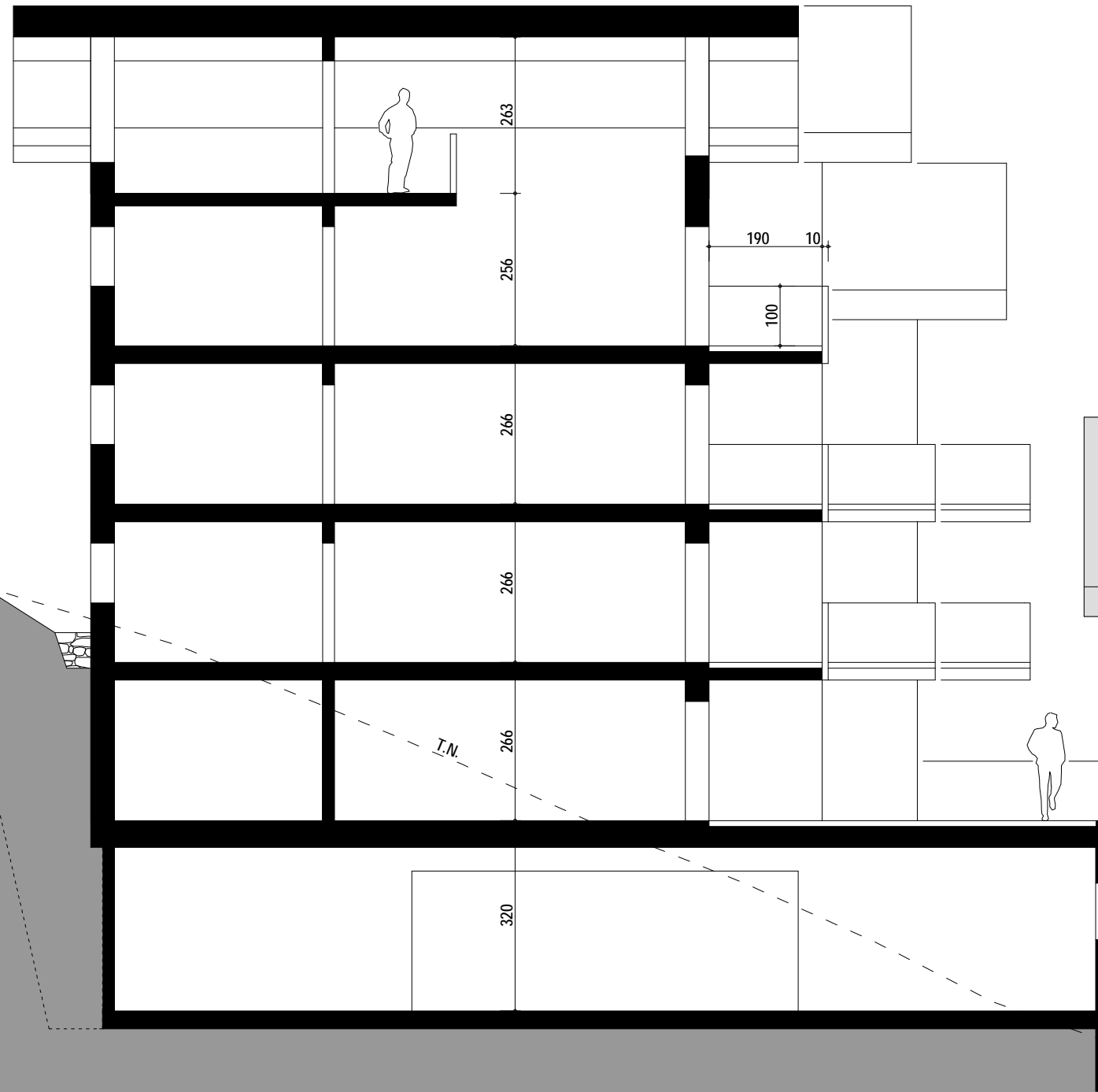
ETAGE 2
NIV. +5.32

NIV. ROUTE

ETAGE 1
NIV. +2.66

REZ
NIV. +0.00
ALTITUDE 1'618.05m

PARKING
NIV. -3.20



PIED DES PISTES C

NIV. +7.80 ALT. 1'618.80m

NIV. +0.00 ALT. 1'611m

COUPE A-A

RESIDENCE "PISTE ROUGE"
GRIMENTZ - ANNIVIERS

ENQUETE PUBLIQUE
COUPE A-A

ECH. 1:100
10.12.2010 - KV

Kittel SA
ARCHITECTES
Jean Kittel & Cie SA Quinodoz & Vouilloz

Place de la Tour - 3961 Vissoie / Anniviers
Tél. 027 / 475 14 84 Fax 027 / 475 27 77
vouilloz @ kittelsa.ch www.kittelsa.ch

FAITE
NIV. +10.53

SABL.
NIV. +9.00

COMBLES NORD
NIV. +7.88

SABLIERE
NIV. +6.69

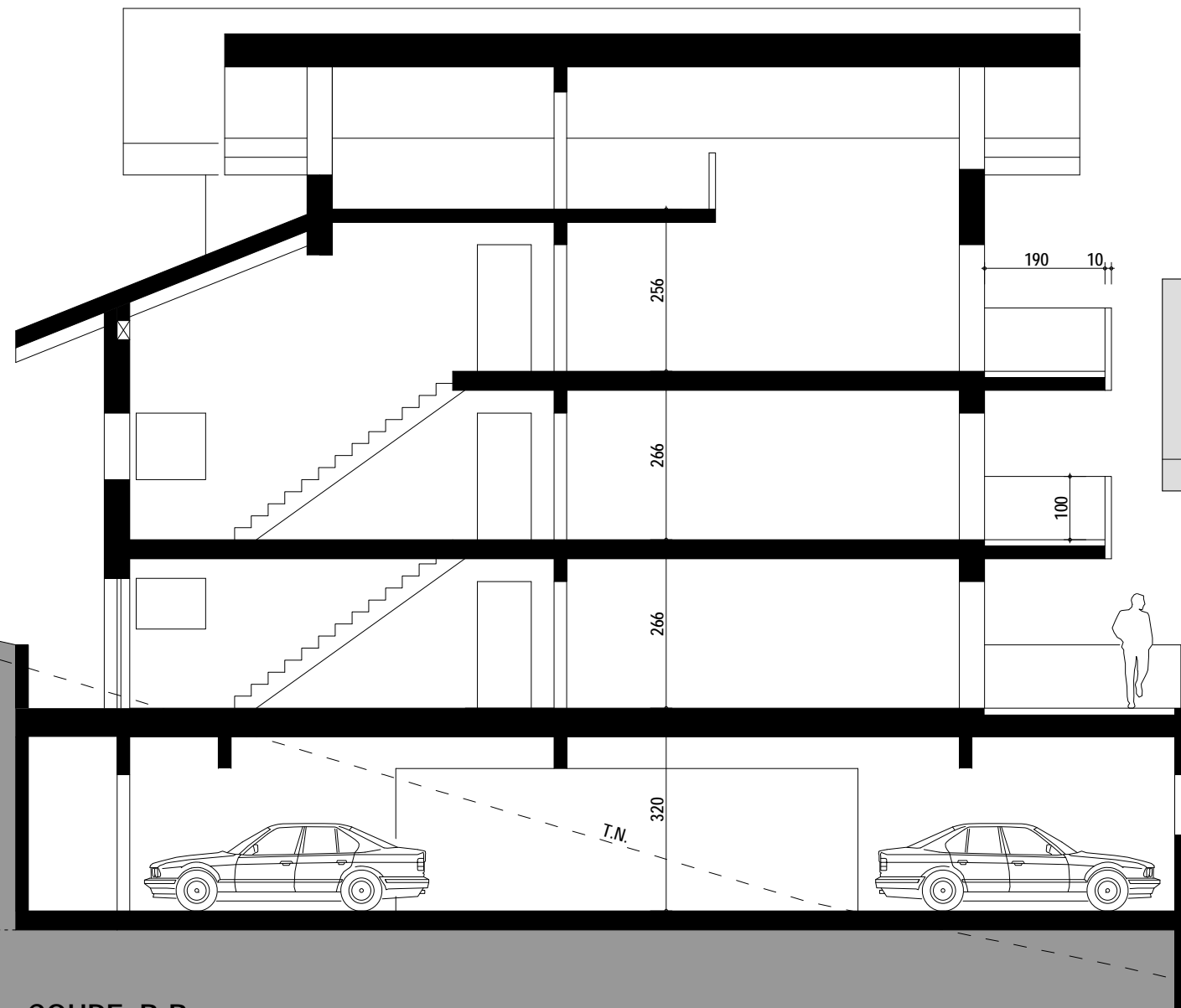
ETAGE 2
NIV. +5.32

ETAGE 1
NIV. +2.66

NIV. ROUTE

REZ
NIV. +0.00
ALTITUDE 1'618.05m

PARKING
NIV. -3.20



PIED DES PISTES C

COUPE B-B

NIV. +0.00 ALT. 1'611m

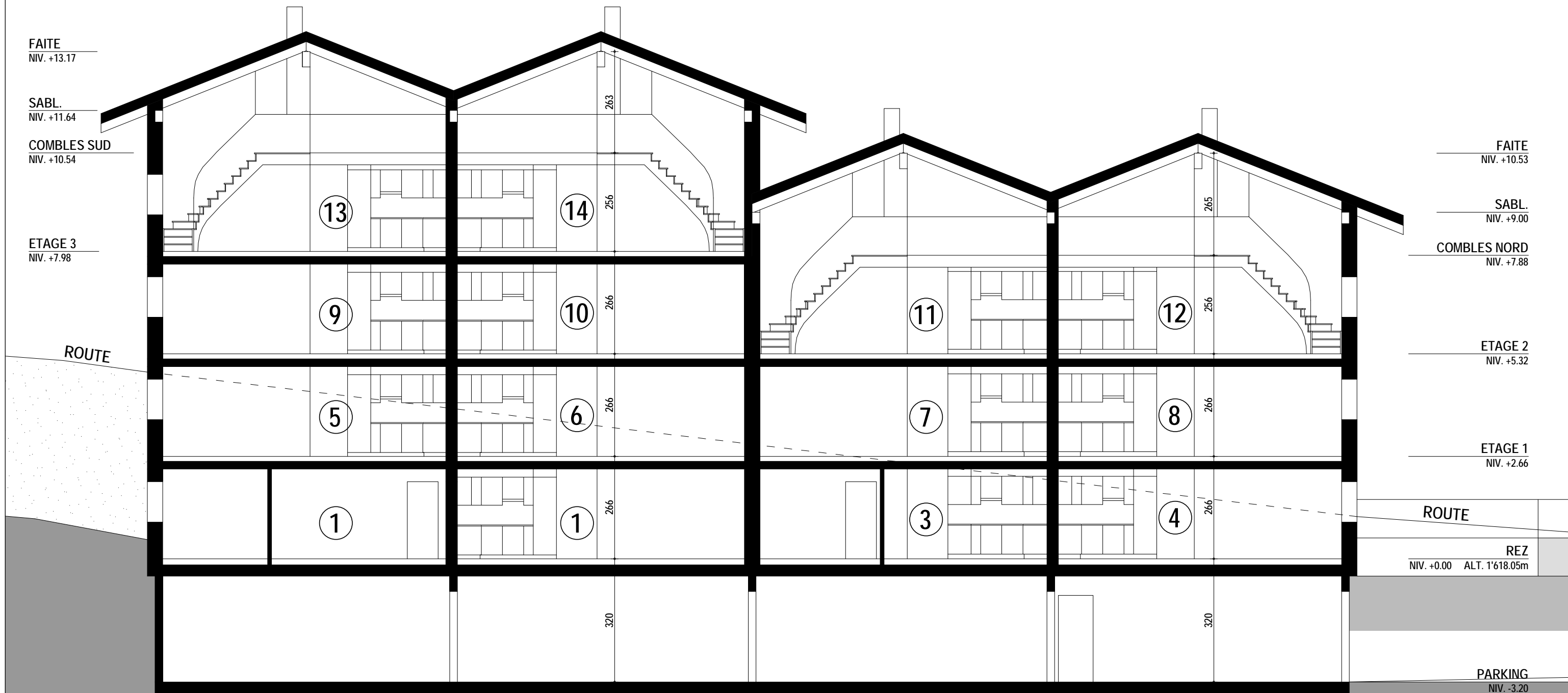
RESIDENCE "PISTE ROUGE"
GRIMENTZ - ANNIVIERS

ENQUETE PUBLIQUE
COUPE B-B

ECH. 1:100
10.12.2010 - KV

Kittel SA
ARCHITECTES
Jean Kittel & Cie SA Quinodoz & Vouilloz

Place de la Tour - 3961 Vissoie / Anniviers
Tél. 027 / 475 14 84 Fax 027 / 475 27 77
vouilloz @ kittelsa.ch www.kittelsa.ch



COUPE LONGITUDINALE



RESIDENCE "PISTE ROUGE" ENQUETE PUBLIQUE ECH. 1:100
GRIMENTZ - ANNIVIERS ELEVATION EST 10.12.2010 - KV

Kittel SA
ARCHITECTES
Jean Kittel & Cie SA Quinodoz & Vouilloz

Place de la Tour - 3961 Vissoie / Anniviers
Tél. 027 / 475 14 84 Fax 027 / 475 27 77
vouilloz @ kittelsa.ch www.kittelsa.ch



ELEVATION OUEST

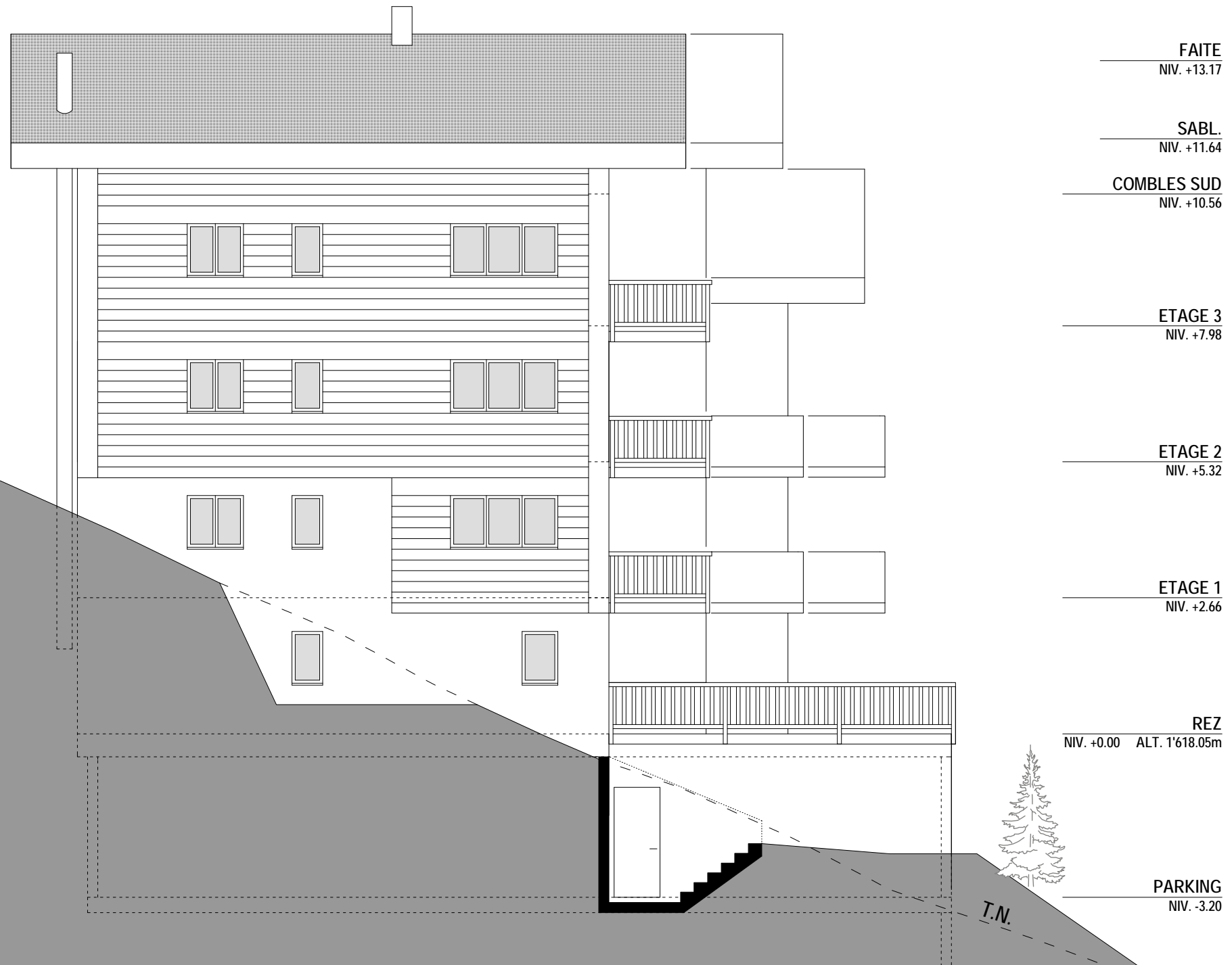
RESIDENCE "PISTE ROUGE"
GRIMENTZ - ANNIVIERS

ENQUETE PUBLIQUE
ELEVATION OUEST

ECH. 1:100
10.12.2010 - KV

Kittel SA
ARCHITECTES
Jean Kittel & Cie SA Quinodoz & Vouilloz

Place de la Tour - 3961 Vissoie / Anniviers
Tél. 027 / 475 14 84 Fax 027 / 475 27 77
vouilloz @ kittelsa.ch www.kittelsa.ch



ELEVATION SUD

RESIDENCE PISTE ROUGE

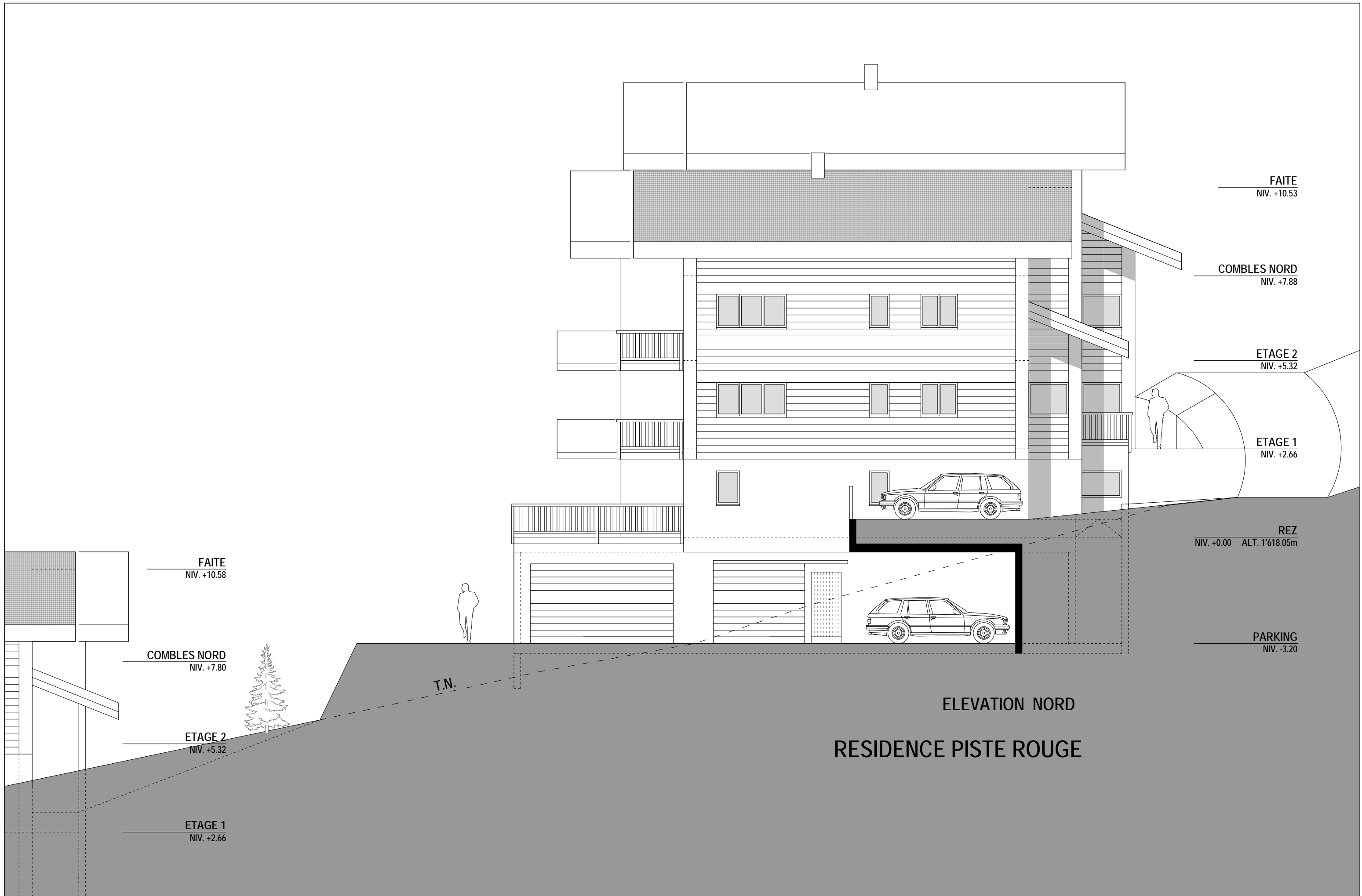
RESIDENCE "PISTE ROUGE"
GRIMENTZ - ANNIVIERS

ENQUETE PUBLIQUE
ELEVATION SUD

ECH. 1:100
10.12.2010 - KV

Kittel SA
ARCHITECTES
Jean Kittel & Cie SA Quinodoz & Vouilloz

Place de la Tour - 3961 Vissoie / Anniviers
Tél. 027 / 475 14 84 Fax 027 / 475 27 77
vouilloz @ kittelsa.ch www.kittelsa.ch



RESIDENCE "PISTE ROUGE"	ENQUETE PUBLIQUE	ECH. 1:100
GRIMENTZ - ANNIVIERS	ELEVATION NORD	10.12.2010 - KV

Kittel SA
ARCHITECTES
Jean Kittel & Cie SA Quinodoz & Vouilloz

Place de la Tour - 3961 Vissoie / Anniviers
Tél. 027 / 475 14 84 Fax 027 / 475 27 77
vouilloz @ kittelsa.ch www.kittelsa.ch