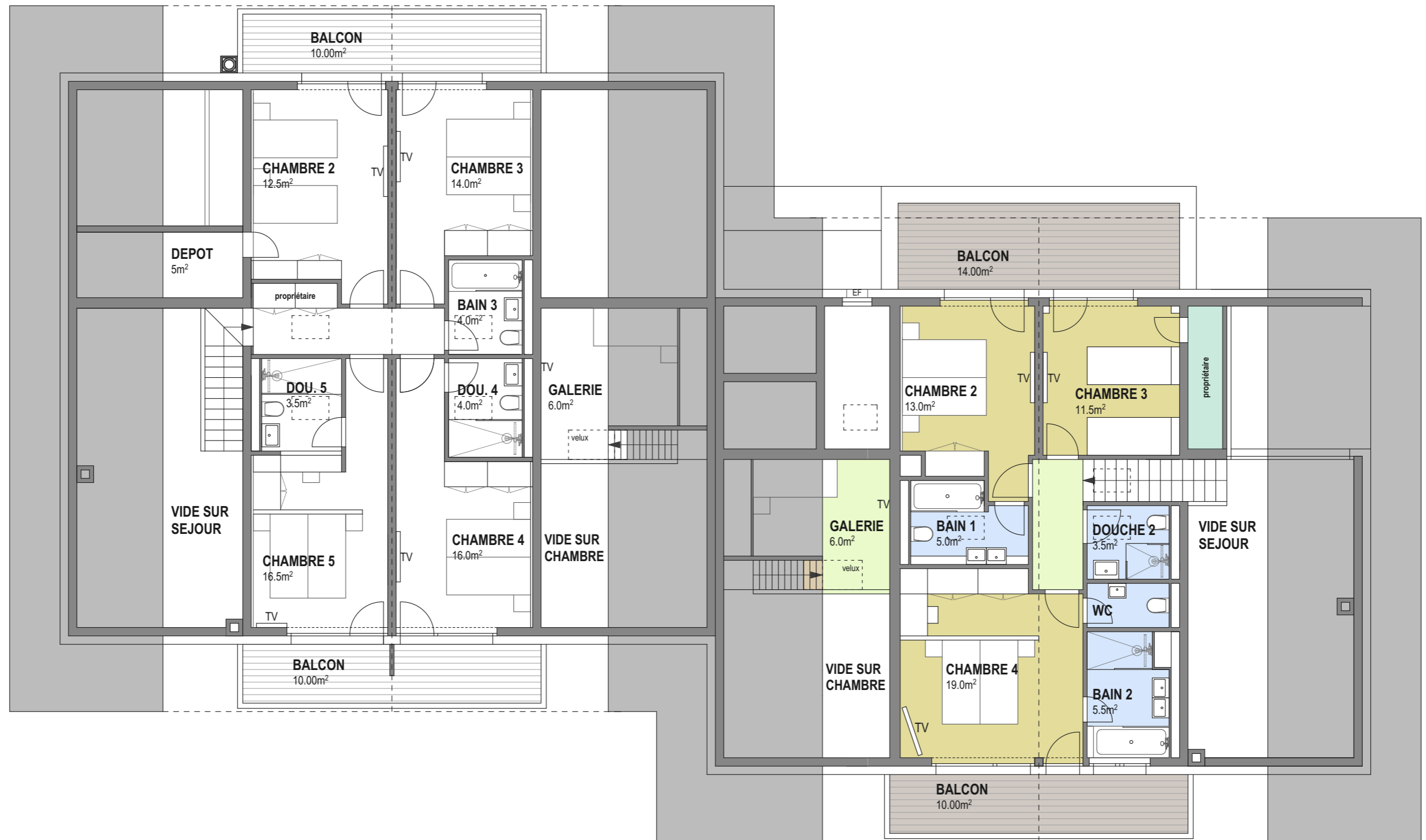


**NIVEAU +4**  
ALT. 1631.40m



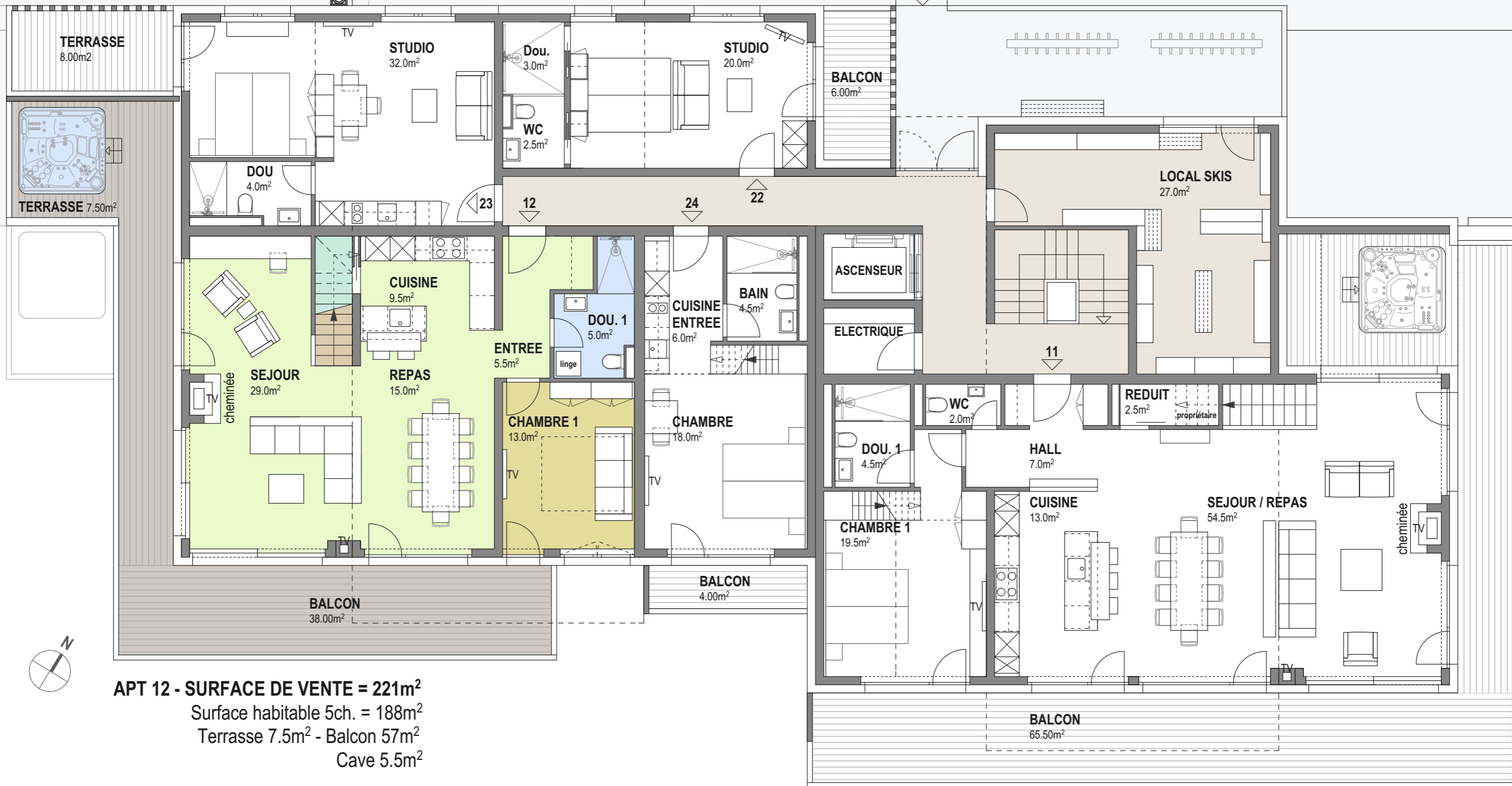
**APT 11 - SURFACE DE VENTE = 255m<sup>2</sup>**  
Surface habitable 4ch. = 207m<sup>2</sup>  
Balcon 90m<sup>2</sup>  
Cave 5m<sup>2</sup>



**APT 11 - SURFACE DE VENTE = 255m<sup>2</sup>**  
 Surface habitable 4ch. = 207m<sup>2</sup>  
 Balcon 90m<sup>2</sup>  
 Cave 5m<sup>2</sup>

**NIVEAU +5**  
 ALT 1634.10m

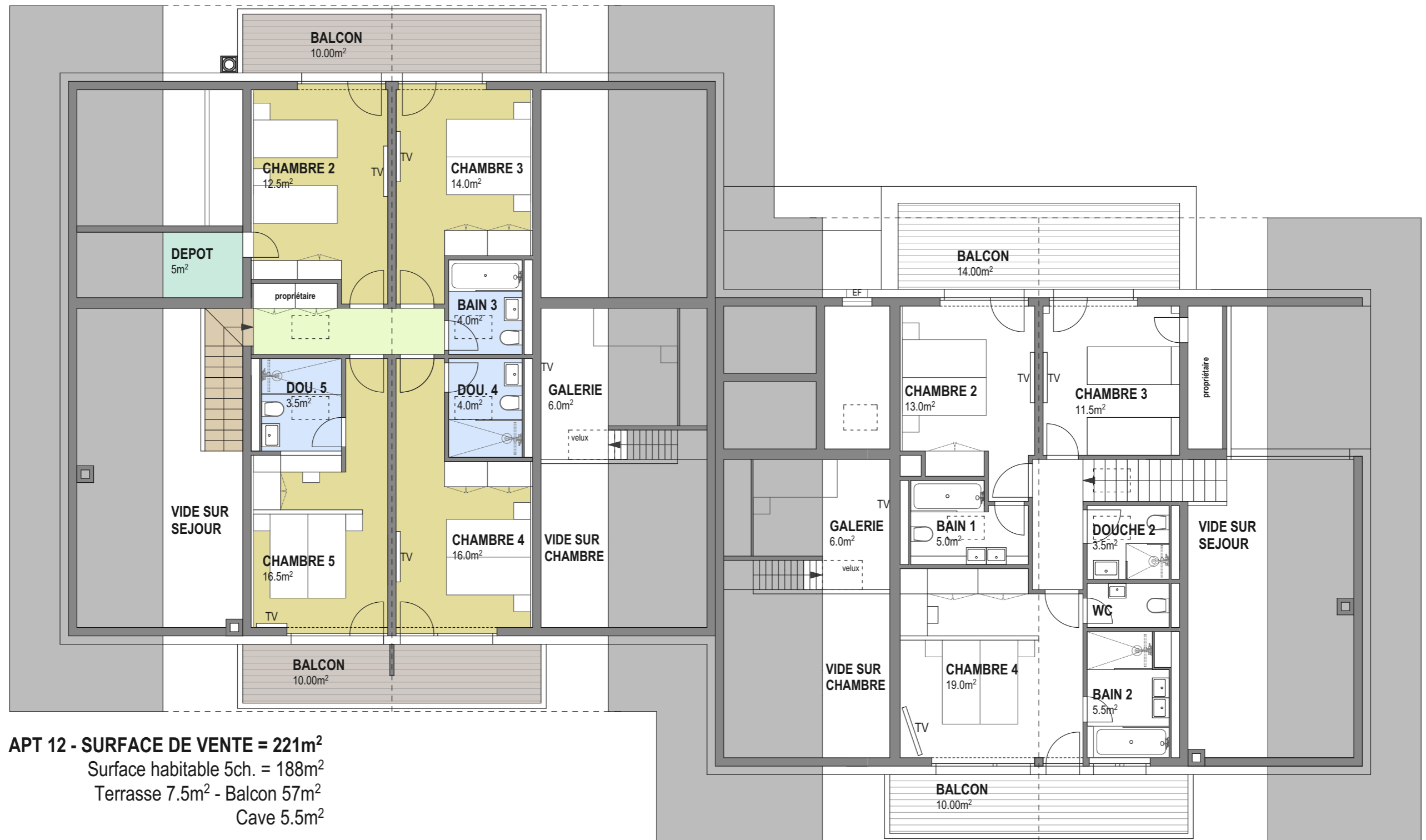




**APT 12 - SURFACE DE VENTE = 221m<sup>2</sup>**  
 Surface habitable 5ch. = 188m<sup>2</sup>  
 Terrasse 7.5m<sup>2</sup> - Balcon 57m<sup>2</sup>  
 Cave 5.5m<sup>2</sup>

**NIVEAU +4**  
 ALT. 1631.40m

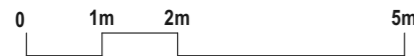




**APT 12 - SURFACE DE VENTE = 221m<sup>2</sup>**  
 Surface habitable 5ch. = 188m<sup>2</sup>  
 Terrasse 7.5m<sup>2</sup> - Balcon 57m<sup>2</sup>  
 Cave 5.5m<sup>2</sup>



**NIVEAU +5**  
 ALT 1634.10m





**APT 14 - SURFACE DE VENTE = 107m<sup>2</sup>**  
 Surface habitable 2ch. = 90m<sup>2</sup>  
 Balcon 30m<sup>2</sup>  
 Cave 3m<sup>2</sup>

**NIVEAU +3**  
 ALT. 1628.70m



**APPARTEMENT n°14**

*Les Rahas*  
 Grimentz



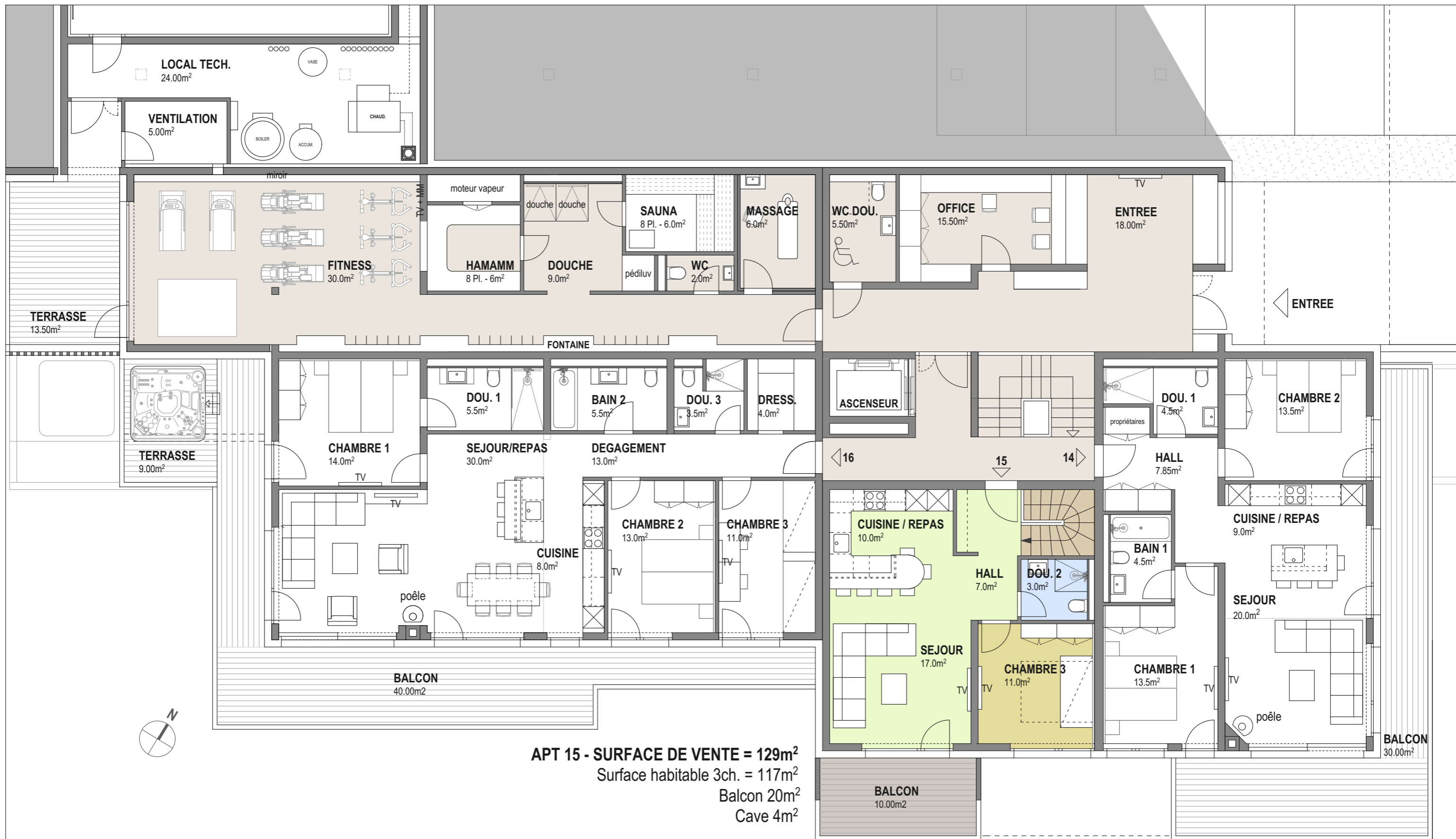
RESIDENCE LES RAHAS  
 GRIMENTZ - ANNIVIERS

PLANS DE VENTE  
 NIVEAU +3

ECH. 1:100  
 06.03.2019 - KV



Place de la Tour - 3961 Vissoie / Anniviers  
 Tél. 027 / 475 14 84 Fax 027 / 475 27 77  
 vouilloz@kittelsa.ch www.kittelsa.ch



**NIVEAU +3**  
 ALT. 1628.70m



**APPARTEMENT n°15**

*Les Rahas*  
 Grimentz



RESIDENCE LES RAHAS  
 GRIMENTZ - ANNIVIERS

PLANS DE VENTE  
 NIVEAU +3

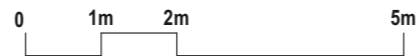
ECH. 1:100  
 06.03.2019 - KV



Place de la Tour - 3961 Vissoie / Anniviers  
 Tél. 027 / 475 14 84 Fax 027 / 475 27 77  
 vouilloz @ kittelsa.ch www.kittelsa.ch



**NIVEAU +2**  
 ALT. 1626.00m



**APPARTEMENT n°15**

*Les Rahàs*  
 Grimentz



RESIDENCE LES RAHAS  
 GRIMENTZ - ANNIVIERS

PLANS DE VENTE  
 NIVEAU +2

ECH. 1:100  
 06.03.2019 - KV

**Kittel SA**  
 ARCHITECTES  
 Jean Kittel & Cie SA Quinodoz & Vouilloz

Place de la Tour - 3961 Vissoie / Anniviers  
 Tél. 027 / 475 14 84 Fax 027 / 475 27 77  
 vouilloz @ kittelsa.ch www.kittelsa.ch





**APT 16 - SURFACE DE VENTE = 152m<sup>2</sup>**  
 Surface habitable 3ch. = 127m<sup>2</sup>  
 Terrasse 9m<sup>2</sup> - Balcon 40m<sup>2</sup>  
 Cave 4.5m<sup>2</sup>



**NIVEAU +3**  
 ALT. 1628.70m



**APPARTEMENT n°16**

*Les Rahas*  
 Grimentz



RESIDENCE LES RAHAS  
 GRIMENTZ - ANNIVIERS

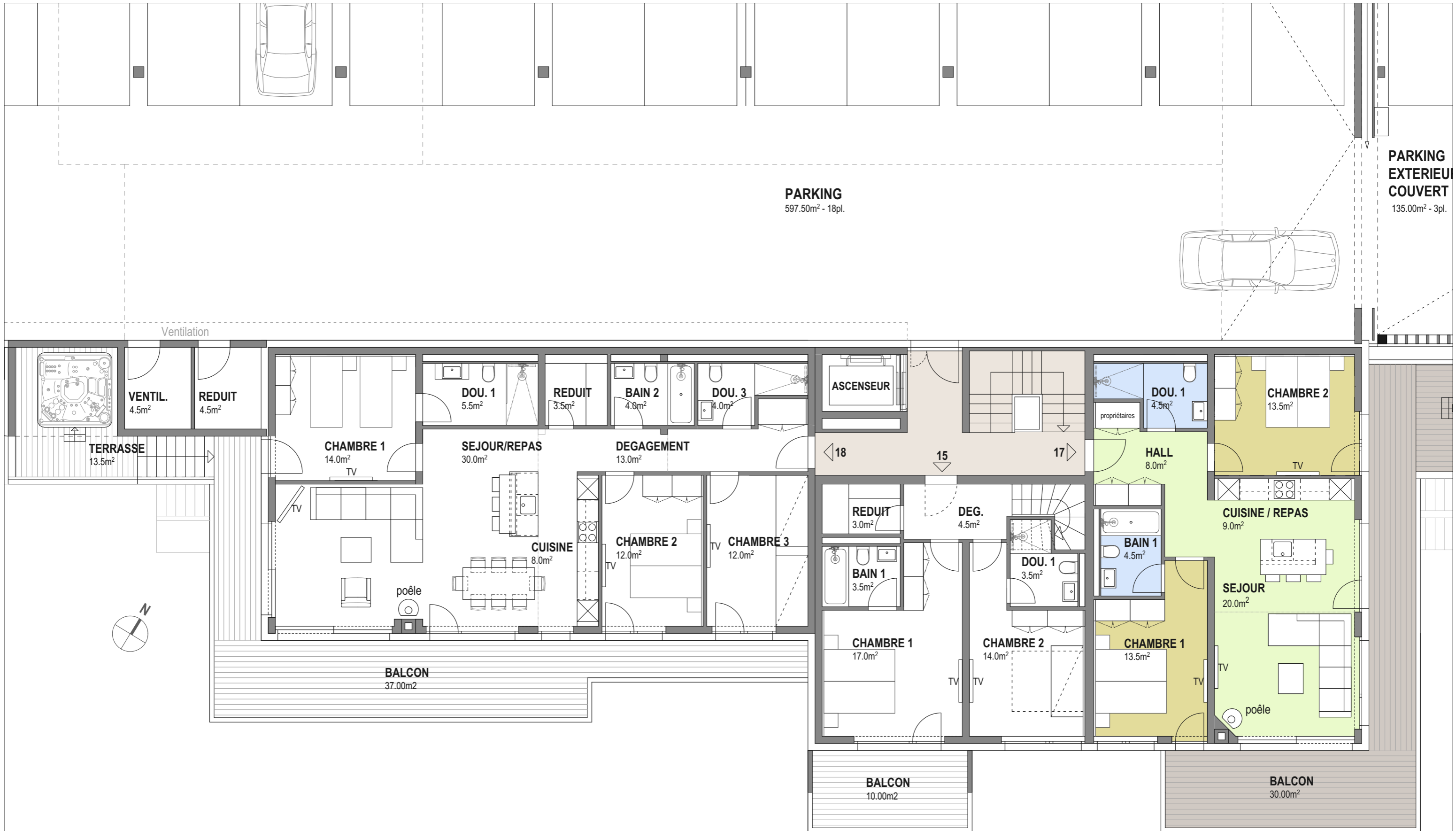
PLANS DE VENTE  
 NIVEAU +3

ECH. 1:100  
 06.03.2019 - KV



Place de la Tour - 3961 Vissoie / Anniviers  
 Tél. 027 / 475 14 84 Fax 027 / 475 27 77  
 vouilloz @ kittelsa.ch www.kittelsa.ch





**PARKING EXTERIEUR COUVERT**  
135.00m<sup>2</sup> - 3pl.

**PARKING**  
597.50m<sup>2</sup> - 18pl.

Ventilation

**NIVEAU +2**  
ALT. 1626.00m



**APT 17 - SURFACE DE VENTE = 110m<sup>2</sup>**  
Surface habitable 2ch. = 90m<sup>2</sup>  
Terrasse 11m<sup>2</sup> - Balcon 30m<sup>2</sup>  
Cave 3.0m<sup>2</sup>

**APPARTEMENT n°17**

*Les Rahàs*  
Grimentz



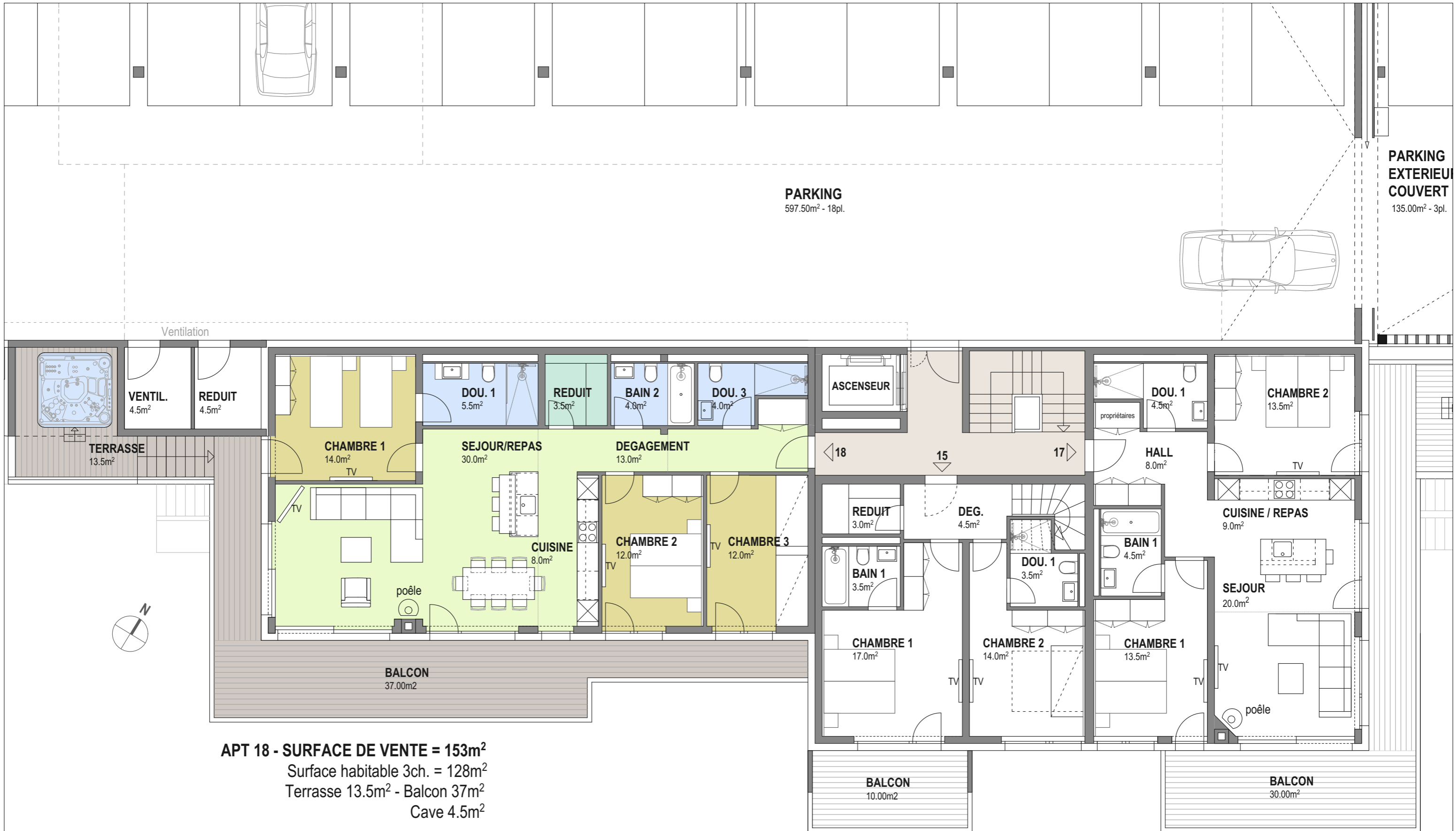
RESIDENCE LES RAHAS  
GRIMENTZ - ANNIVIERS

PLANS DE VENTE  
NIVEAU +2

ECH. 1:100  
06.03.2019 - KV



Place de la Tour - 3961 Vissoie / Anniviers  
Tél. 027 / 475 14 84 Fax 027 / 475 27 77  
vouilloz @ kittelsa.ch www.kittelsa.ch



**APT 18 - SURFACE DE VENTE = 153m<sup>2</sup>**  
 Surface habitable 3ch. = 128m<sup>2</sup>  
 Terrasse 13.5m<sup>2</sup> - Balcon 37m<sup>2</sup>  
 Cave 4.5m<sup>2</sup>

**NIVEAU +2**  
 ALT. 1626.00m



**APPARTEMENT n°18**

*Les Rahas*  
 Grimentz



RESIDENCE LES RAHAS  
 GRIMENTZ - ANNIVIERS

PLANS DE VENTE  
 NIVEAU +2

ECH. 1:100  
 06.03.2019 - KV



Place de la Tour - 3961 Vissoie / Anniviers  
 Tél. 027 / 475 14 84 Fax 027 / 475 27 77  
 vouilloz @ kittelsa.ch www.kittelsa.ch



**APT 19 - SURF. DE VENTE = 239m<sup>2</sup>**  
 Surface habitable 4ch. = 207m<sup>2</sup>  
 Terrasse 48m<sup>2</sup> - Balcon 27m<sup>2</sup>  
 Cave 4.5m<sup>2</sup>

**NIVEAU +1**  
 ALT. 1623.30m



**APPARTEMENT n°19**

*Les Rahas*  
 Grimentz



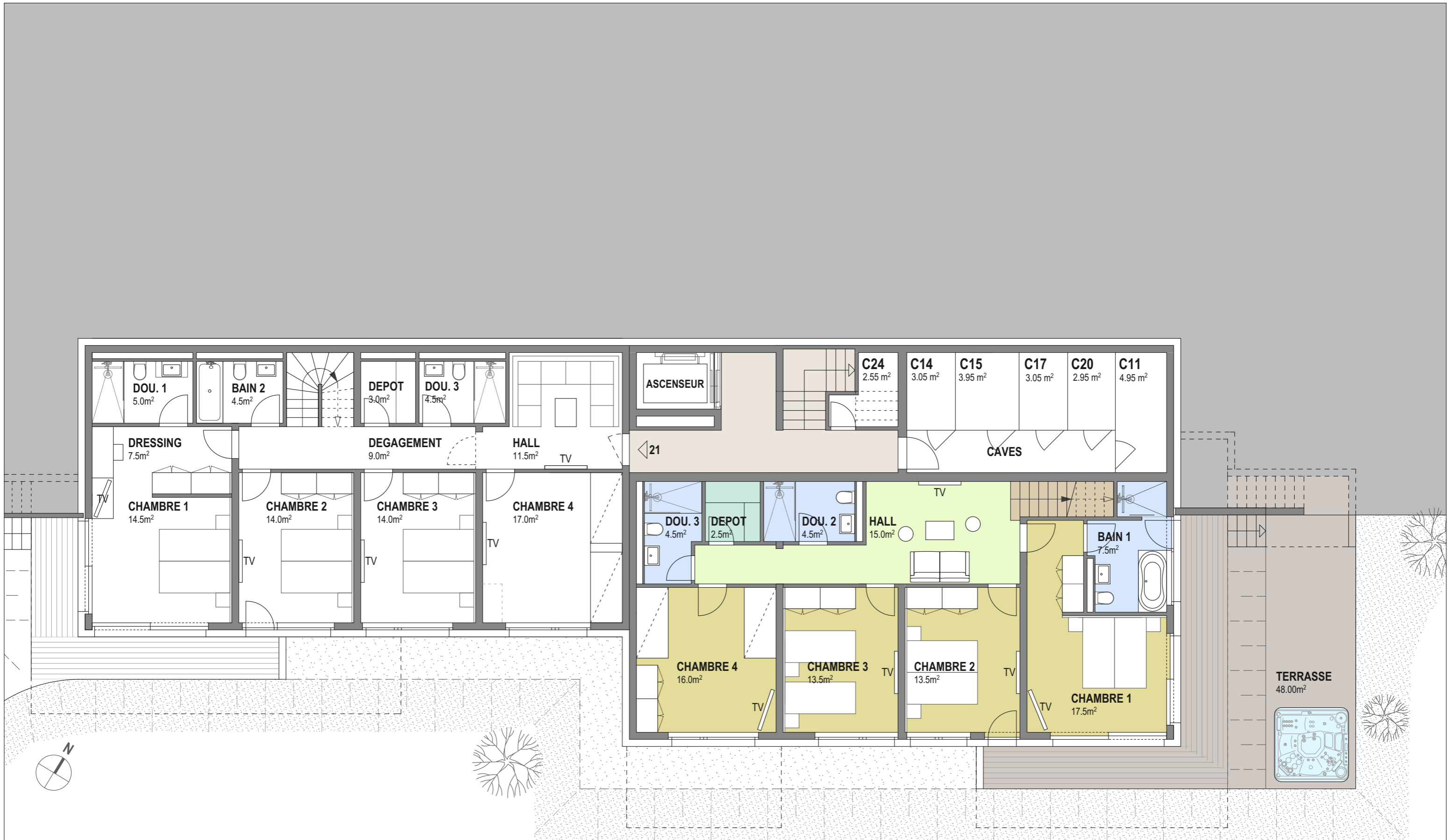
RESIDENCE LES RAHAS  
 GRIMENTZ - ANNIVIERS

PLANS DE VENTE  
 NIVEAU +1

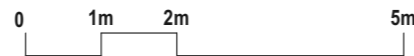
ECH. 1:100  
 06.03.2019 - KV



Place de la Tour - 3961 Vissoie / Anniviers  
 Tél. 027 / 475 14 84 Fax 027 / 475 27 77  
 vouilloz @ kittelsa.ch www.kittelsa.ch



**NIVEAU +0**  
ALT. 1620.60m



**APT 19 - SURF. DE VENTE = 239m<sup>2</sup>**  
Surface habitable 4ch. = 207m<sup>2</sup>  
Terrasse 48m<sup>2</sup> - Balcon 27m<sup>2</sup>  
Cave 4.5m<sup>2</sup>

**APPARTEMENT n°19**

*Les Rahàs*  
Grimentz



RESIDENCE LES RAHAS  
GRIMENTZ - ANNIVIERS

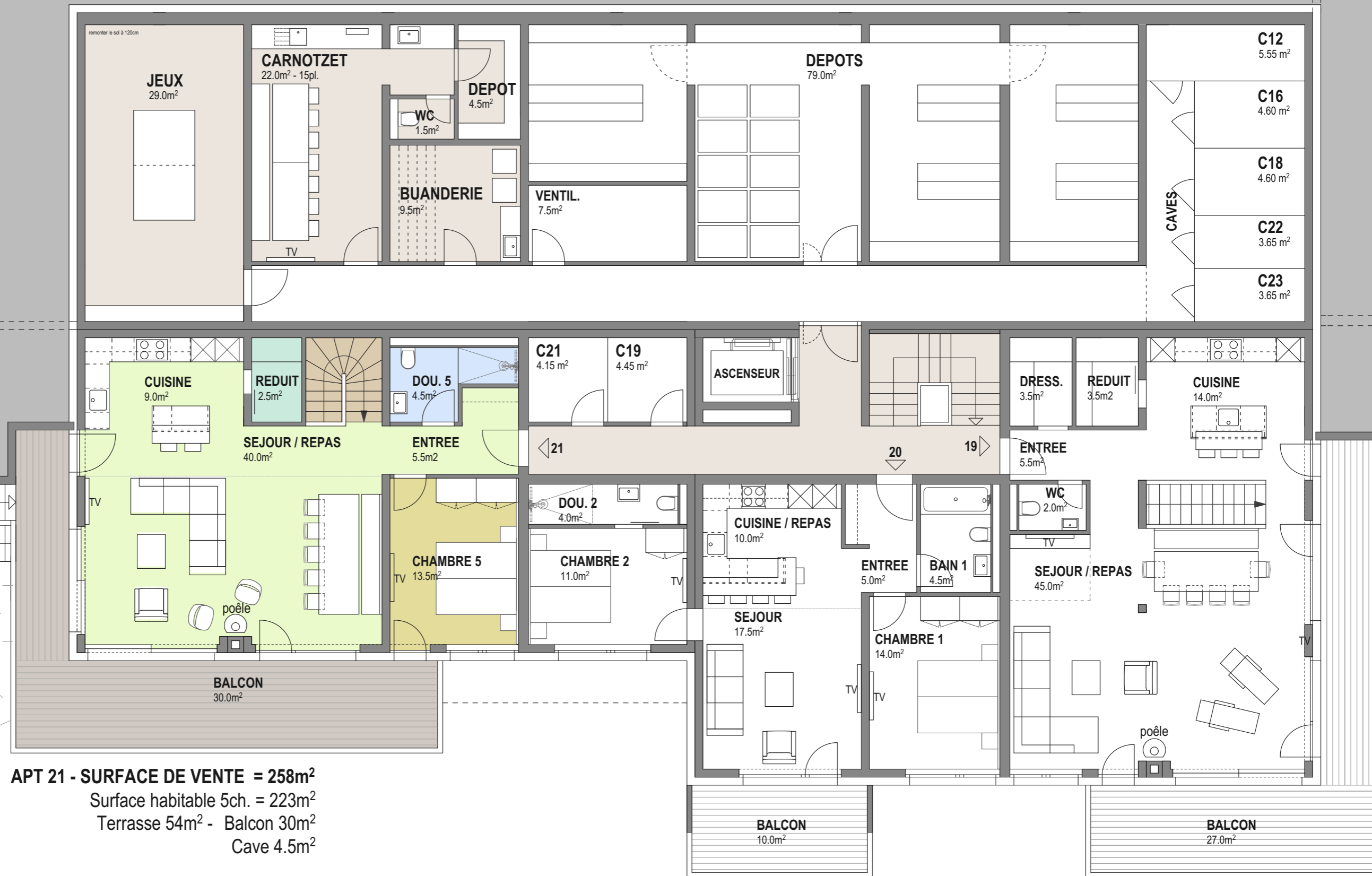
PLANS DE VENTE  
NIVEAU +0

ECH. 1:100  
06.03.2019 - KV

**Kittel SA**  
ARCHITECTES  
Jean Kittel & Cie SA Quinodoz & Vouilloz

Place de la Tour - 3961 Vissoie / Anniviers  
Tél. 027 / 475 14 84 Fax 027 / 475 27 77  
vouilloz @ kittelsa.ch www.kittelsa.ch



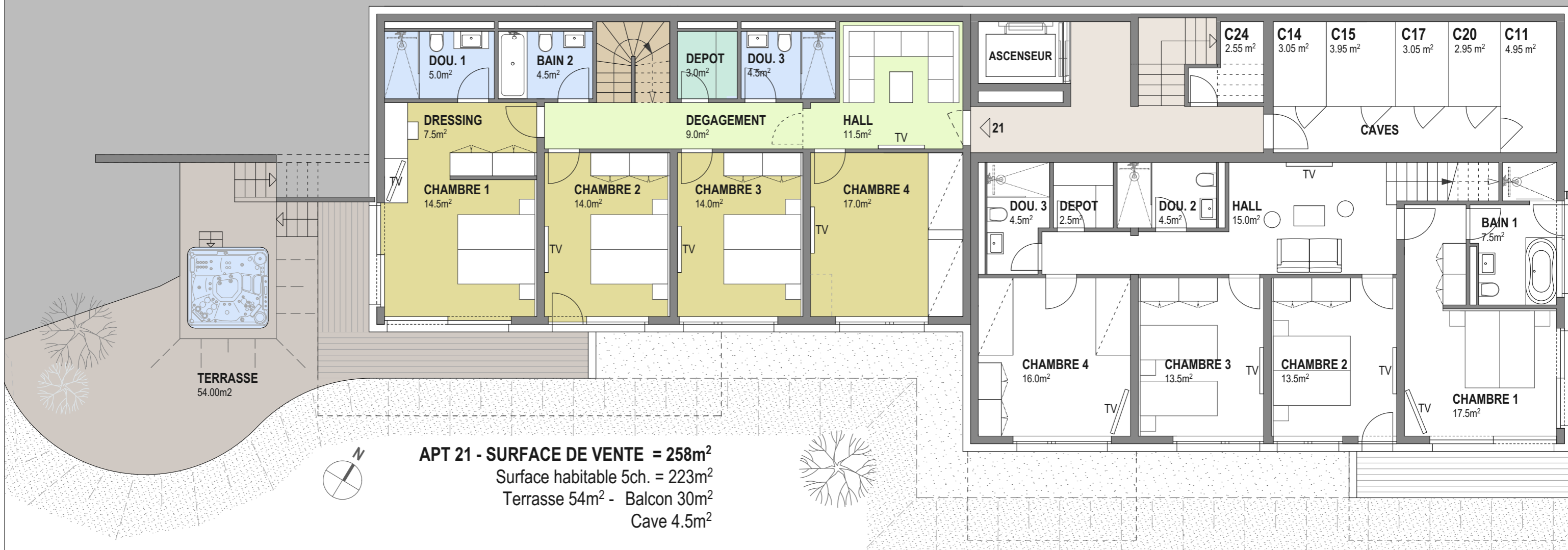


**APT 21 - SURFACE DE VENTE = 258m<sup>2</sup>**  
 Surface habitable 5ch. = 223m<sup>2</sup>  
 Terrasse 54m<sup>2</sup> - Balcon 30m<sup>2</sup>  
 Cave 4.5m<sup>2</sup>

**NIVEAU +1**  
 ALT. 1623.30m







**APT 21 - SURFACE DE VENTE = 258m<sup>2</sup>**  
 Surface habitable 5ch. = 223m<sup>2</sup>  
 Terrasse 54m<sup>2</sup> - Balcon 30m<sup>2</sup>  
 Cave 4.5m<sup>2</sup>



**NIVEAU +0**  
 ALT. 1620.60m



**APPARTEMENT n°21**

*Les Rahàs*  
 Grimentz



RESIDENCE LES RAHAS GRIMENTZ - ANNIVIERS	PLANS DE VENTE NIVEAU +0	ECH. 1:100 06.03.2019 - KV
---	-----------------------------	-------------------------------



Place de la Tour - 3961 Vissoie / Anniviers	
Tél. 027 / 475 14 84	Fax 027 / 475 27 77
vouilloz @ kittelsa.ch	www.kittelsa.ch